
CHECKLIST FOR SUSTAINABLE EVENTS

Fira de Barcelona is strongly committed to sustainable development and the desire to become a venue of reference with regards to sustainability in the sector of trade fairs and events. For this reason, it implements measures, projects and actions to reduce the environmental impact of its activity and generate a positive social and economic impact.

Fira de Barcelona strives to extend this commitment to external event organisers, exhibitors and suppliers, as well as to all visitors.

The aim of this guide is to inform, raise awareness and involve organisers and stand build up companies to make their time at the Fira more sustainable and environmentally friendly. Moreover, it aims to provide them with solutions that already exist in the Fira's business proposal to facilitate this common goal.



BEFORE

Design

Promotional materials

Goods and
its transportation

Catering

Planning the trip to
Fira

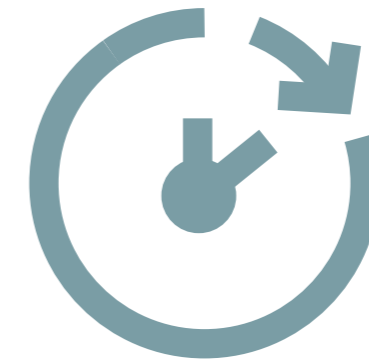


DURING

Waste

Energy consumption

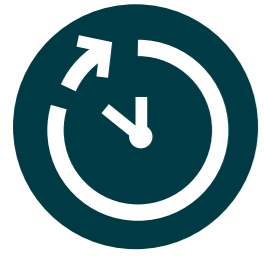
Mobility



AFTER

Dismantling

Waste



PREPARATION

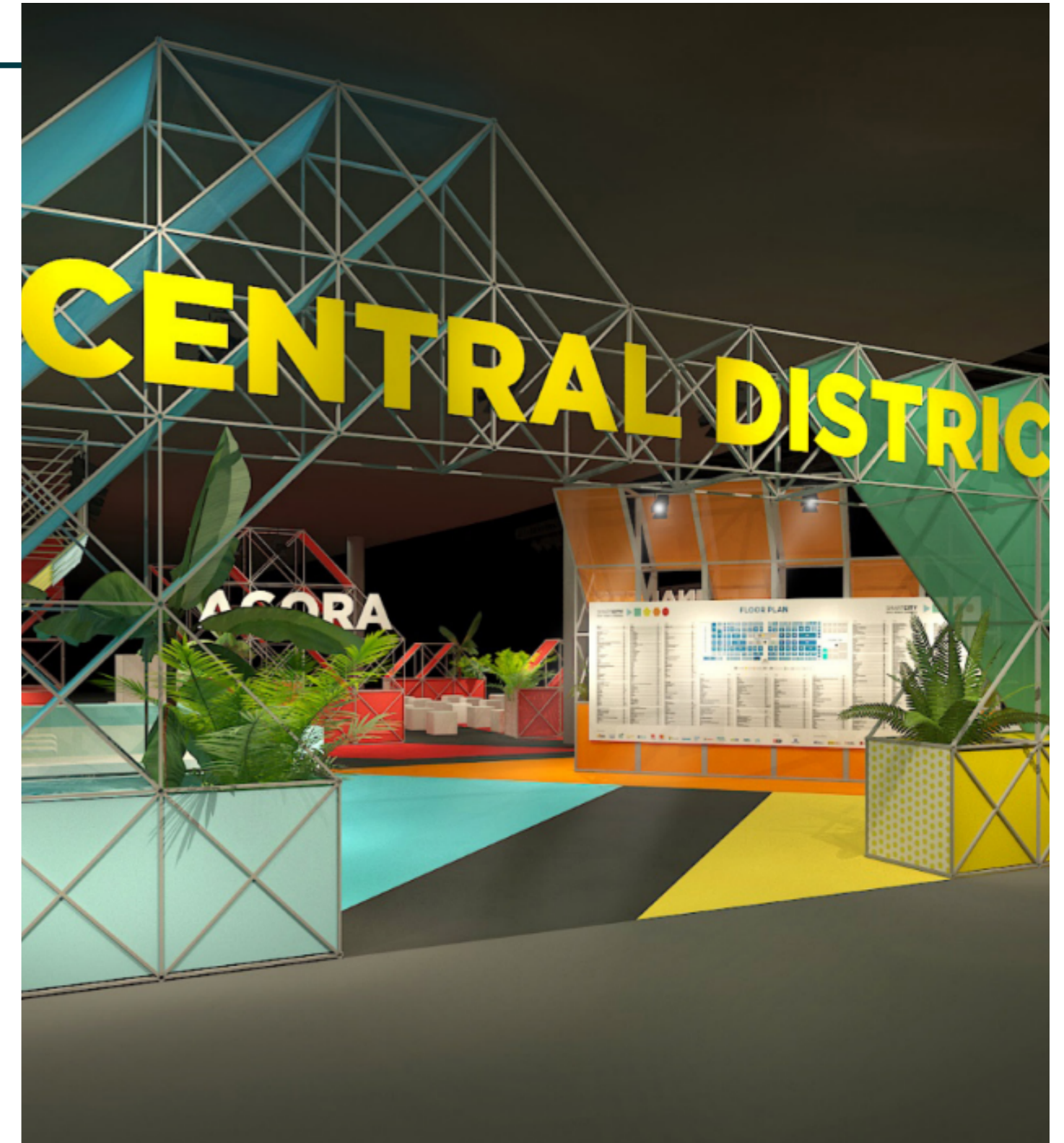
PRIOR TO COME TO FIRA BARCELONA

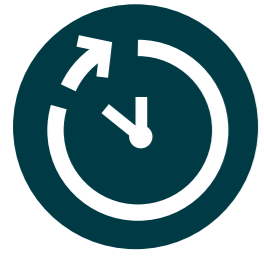
1

DESIGN:

- Request that the design of your space (stand, auditorium, hall) is created based on the **circular economy and eco-design**.
- **Certified sustainable materials:** ask your designer/builder to use non-polluting, recycled or recyclable materials. Avoid vinyls, toxic paints, non-certified wood, PVC, etc.
- Prioritise renting furniture and decorative elements over purchasing them for one-time use.
- Reserve a space to separate the different waste fractions that are generated.
- **Zero waste:** leave zero or minimal waste at the venue and surroundings.
- Hire local suppliers to avoid long journeys, shipments and the resulting greenhouse gas emissions.

Fira de Barcelona offers services from the **Servifira** and **Build UP** departments which have extensive experience in building structures that meet all these sustainability criteria. Click here for more information and to contact : servifira.com and buildupfira.com





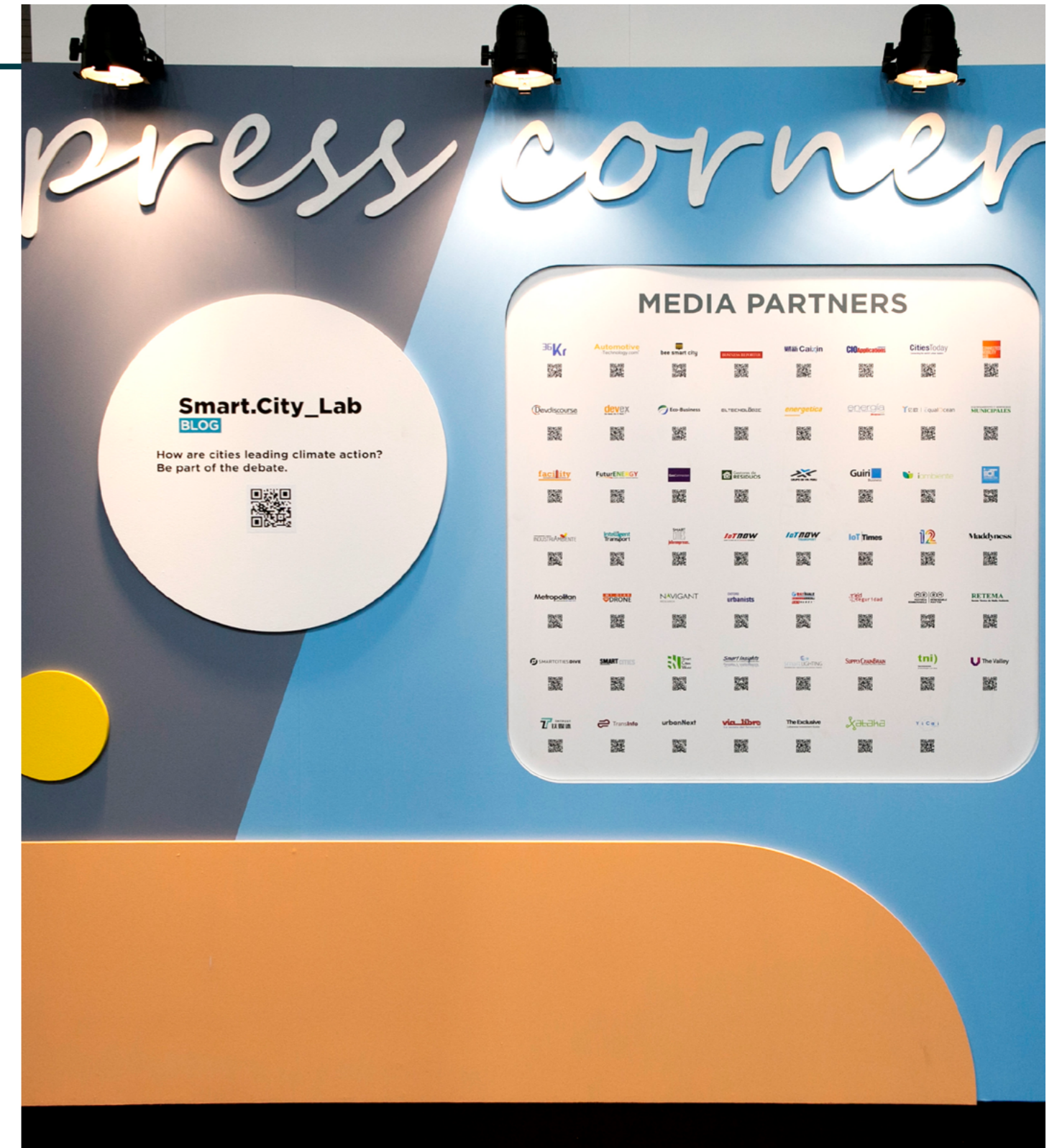
PREPARATION

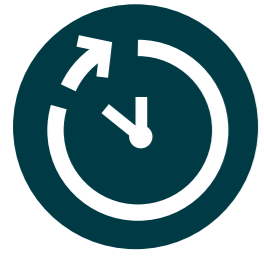
PRIOR TO COME TO FIRA BARCELONA



2 PROMOTIONAL MATERIAL:

- Avoid the printing of advertising information. Commit to **dematerialisation**.
- If you print materials, do so with recycled paper, vegetable-based inks and, whenever possible, try to ensure the reusability of these printouts by **omitting specific dates**.
- Promote **more responsible merchandising** that generates a positive impact (products that are local, fair trade, part of a social project, made from sustainable materials, with potential uses beyond the trade fair, plastic-free, etc.).





PREPARATION

PRIOR TO COME TO FIRA BARCELONA

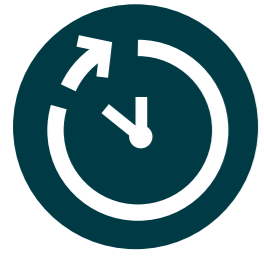
3

GOODS AND TRANSPORTATION

- Avoid the use of plastic packaging and use other less polluting materials such as **cardboard, textile, wood, etc.** that are reusable, recyclable or contain recycled and/or certified components (FSC, PEFC...)
- Optimise the shipment load and packaging. For example: reduce its size by decreasing the necessary filling and strapping, etc. Make an **appropriate estimate of the goods** that will be required.
- Prioritise packaging that can be reused. Use packaging that can be used for both incoming and outgoing goods, encouraging **their reuse**.
- Choose the proper vehicle size to match its load. **Avoid transporting air.**
- Use **alternative fuel vehicles** whenever possible (gas, hybrid, electric, etc.).
- Use vehicles that are **properly maintained**, and plan and choose routes that cover fewer kilometres and involve shorter waiting times.
- Take into account Barcelona's LEZ (Low Emissions Zone) where circulation of the most polluting cars is being progressively restricted. This is one of the city's measures to protect that quality of air that we breathe and guarantee the right to health in the city. Learn more here:

<https://www.zbe.barcelona/en/zones-baixas-emissions/la-zbe.html>





PREPARATION

PRIOR TO COME TO FIRA BARCELONA

4

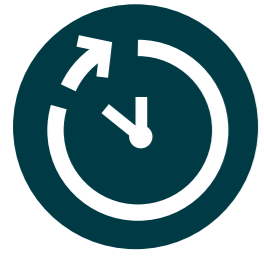
CATERING:

- Avoid single-use plastics. Request **reusable kitchenware and utensils**, whenever possible.
- Request **local, seasonal** produce.
- Avoid food waste. Adjust your order to the true expected consumption.
- Request a **water dispenser** and compostable/biodegradable cups instead of bottles. We suggest that your staff bring their own reusable bottle.

Gastrofira
a food experience

Contact our Gastrofira department so they can offer you these and other sustainable options: gastrofira.com





PREPARATION

PRIOR TO COME TO FIRA BARCELONA

5

PLANNING THE TRIP TO FIRA:

- Use the train whenever possible to avoid short flights.
- Fira de Barcelona is very well connected to the city. Learn more here:

[Gran Via](#)
[Montjuic](#)
[TMB Information](#)

- Fira de Barcelona has charging stations for electric vehicles.
- Stay at hotels that ensure sustainability and offer sustainable forms of mobility (transfers in electric vehicles, bicycle rental, etc.) For more information, contact the Barcelona Convention Bureau. barcelonaconventionbureau.com
- Consider the possibility of offsetting your trip's carbon footprint.





BUILD UP AND SHOW DAYS

DURING THE EVENT

1

WASTE:

- The build company should **separate waste generated** during build up. Correctly use the different types of waste bins (wood, plastic, mixed) during build up.
- Do not use products with toxic chemicals. Remember that special waste such as paints, glues or solvents must be **correctly collected and managed**.
- **Reuse** packaging.
- Correctly use the different waste bins provided by Gastrofira at its catering areas.
- If you have any leftover material, reuse it at another event or donate it. Or as a last resort, treat it correctly as waste.
- Properly use recycling bins during the event. **Each waste item must go into the correct bin.** If you have any questions about a waste item, deposit it in the grey mixed/other waste bin. Help us recycle!
- Prioritise the use of the QR code and other forms of digital communication to **avoid the use of paper**.





BUILD UP AND SHOW DAYS

DURING THE EVENT

2

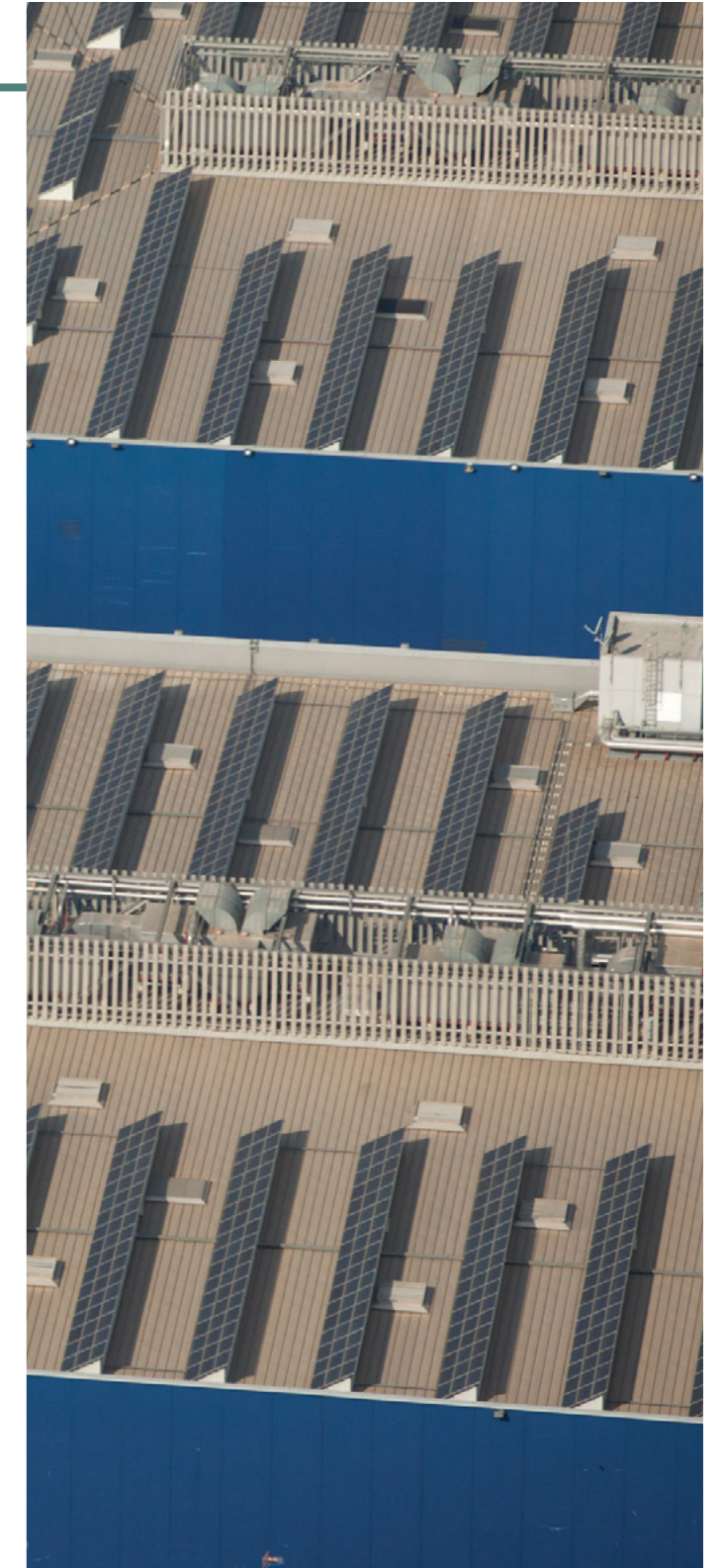
ENERGY CONSUMPTION:

- Follow the specific timetables of the hall to **avoid prolonged energy consumption** at the venue.
- Use **energy-efficient machinery** as much as possible.
- Turn off equipment and lights when not in use.
- **Reduce water consumption.** Notify the hall manager if any leak or malfunctioning of the services is detected.

Fira de Barcelona only uses green electricity from **renewable sources** such as solar, wind, hydraulic, biomass, tidal, geothermal, or biogas energy. This initiative prevents the emission of 12,500 tonnes of CO₂ per year, equivalent to planting one million trees.

Energy efficiency. Fira de Barcelona is Spain's pioneer in equipping an entire trade fair venue (Gran Via) with IoT technology to optimise energy consumption linked to air conditioning. We also installed energy-efficient lighting systems (LED).

Renewable energies. The Gran Via venue has one of the most important rooftop solar farms in the world, with 25,947 panels on 135,000 m² which generate 5.86 GWh of electricity per year, preventing the emission of more than 2,200 tonnes of CO₂. We are connected to the city's heat and cold distribution network, using energy from renewable sources.





BUILD UP AND SHOW DAYS

DURING THE EVENT

3

MOBILITY IN BARCELONA AND ITS SURROUNDINGS:

- Use **public transport and carpooling**. Fira de Barcelona is connected by metro, railway and bus. [TMB Information](#) [FGC Information](#)
- Consider the option of travelling by bicycle or scooter in the city. Barcelona has a vast network of **cycle lanes**. [Click here for more information.](#)
- If renting a car, make sure that you use an **electric vehicle**. We have charging points at the venue.



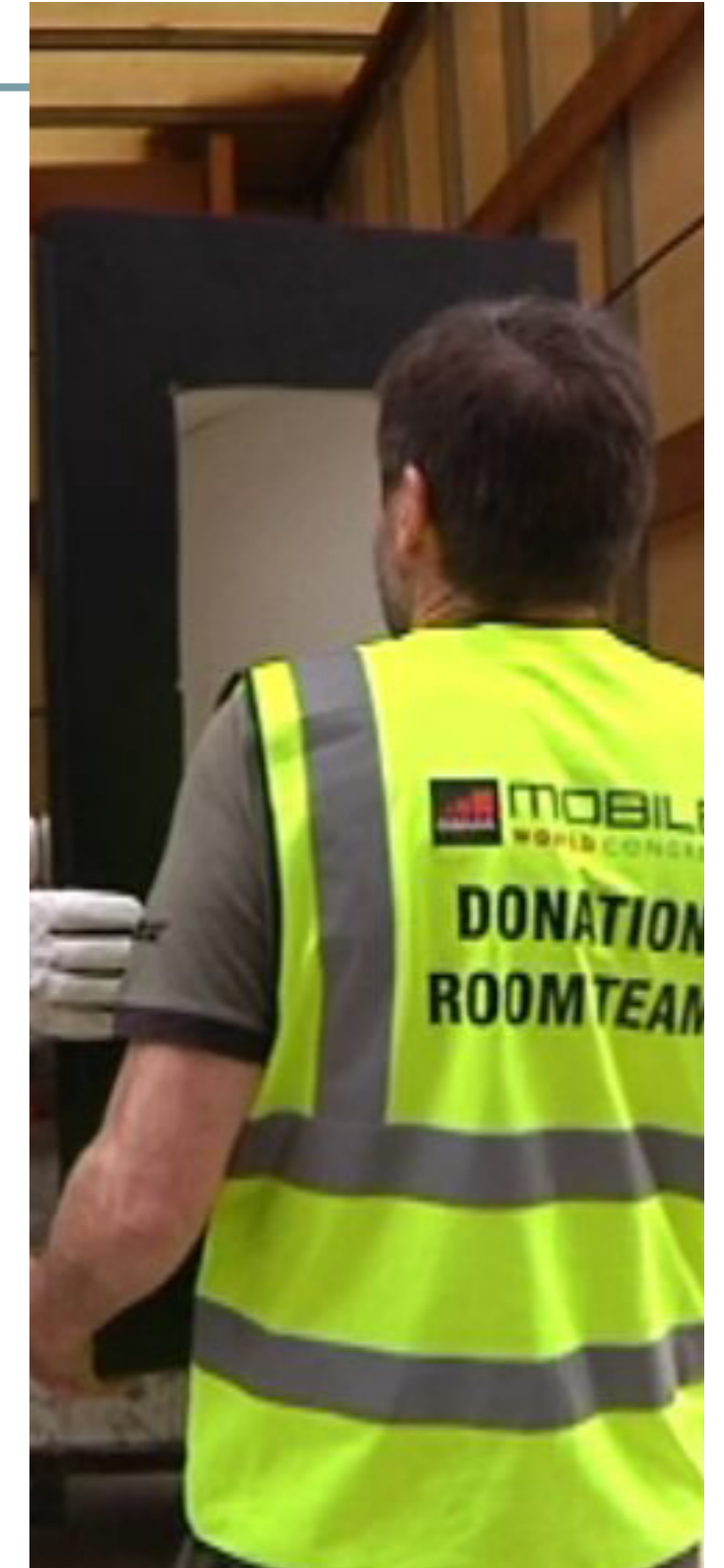


DISMANTLING

1

POST-EVENT:

- If dismantling generates waste, correctly use the recycling bins offered by Fira de Barcelona. Doing so will help revalue and recycle waste through our **selective collection system**. Remember that you can reduce waste in this phase by following the recommendations given in this guide.
- If you have any leftover material, **reuse it at another event** or donate it. Or as a last resort, treat it correctly as waste. Consult the different initiatives of each hall and collaborate with them to give the leftover materials a second life.
- Use **energy-efficient machinery** and turn off devices when not in use.





Thank you for collaborating with Fira de Barcelona to make our trade fairs and events more sustainable

For more information about sustainability at Fira de Barcelona, visit our website: :

[.firabarcelona.com/en/sustainability-environment/](https://firabarcelona.com/en/sustainability-environment/)
guestevents.firabarcelona.com/en/organizers/faqs-sustainability/

